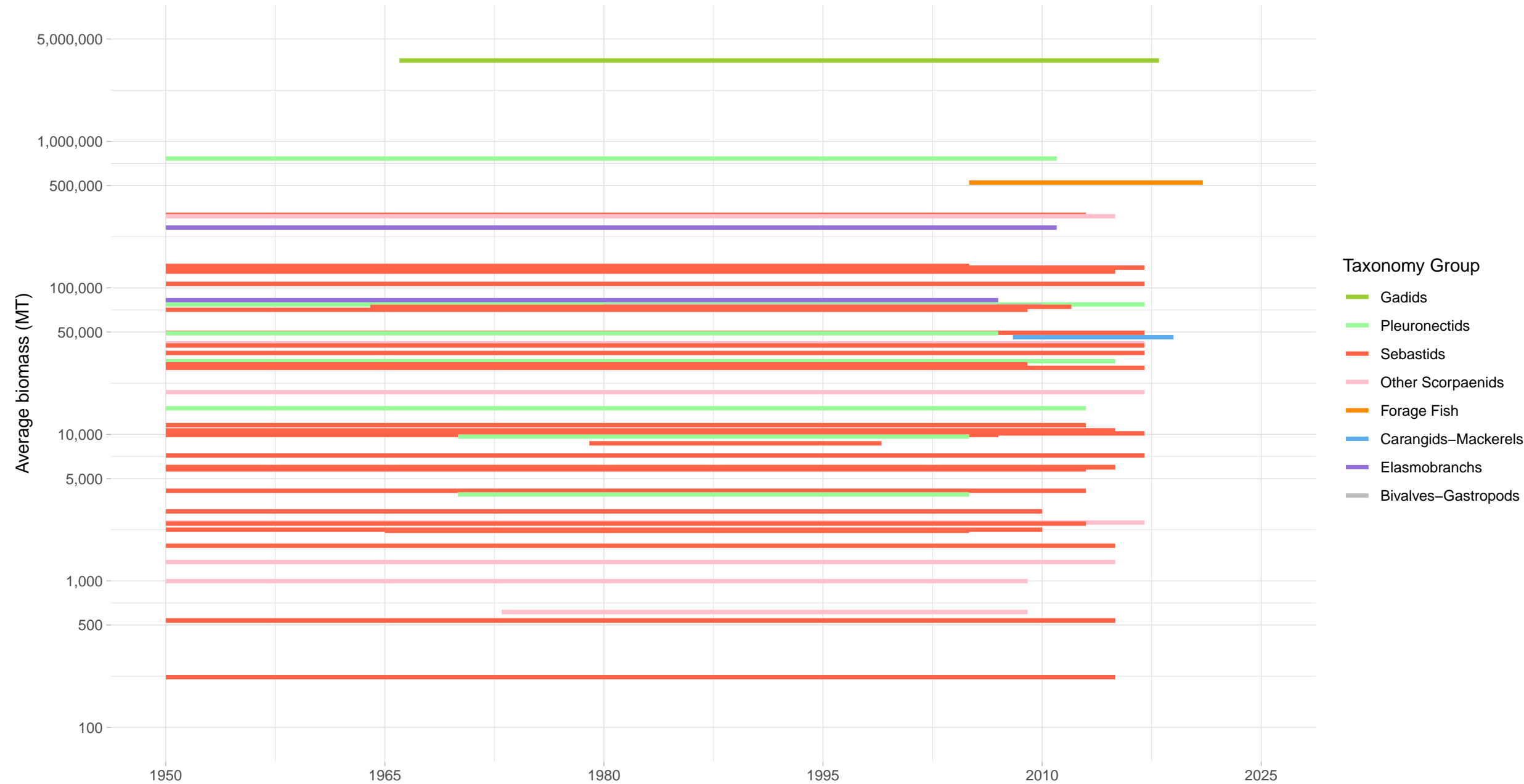
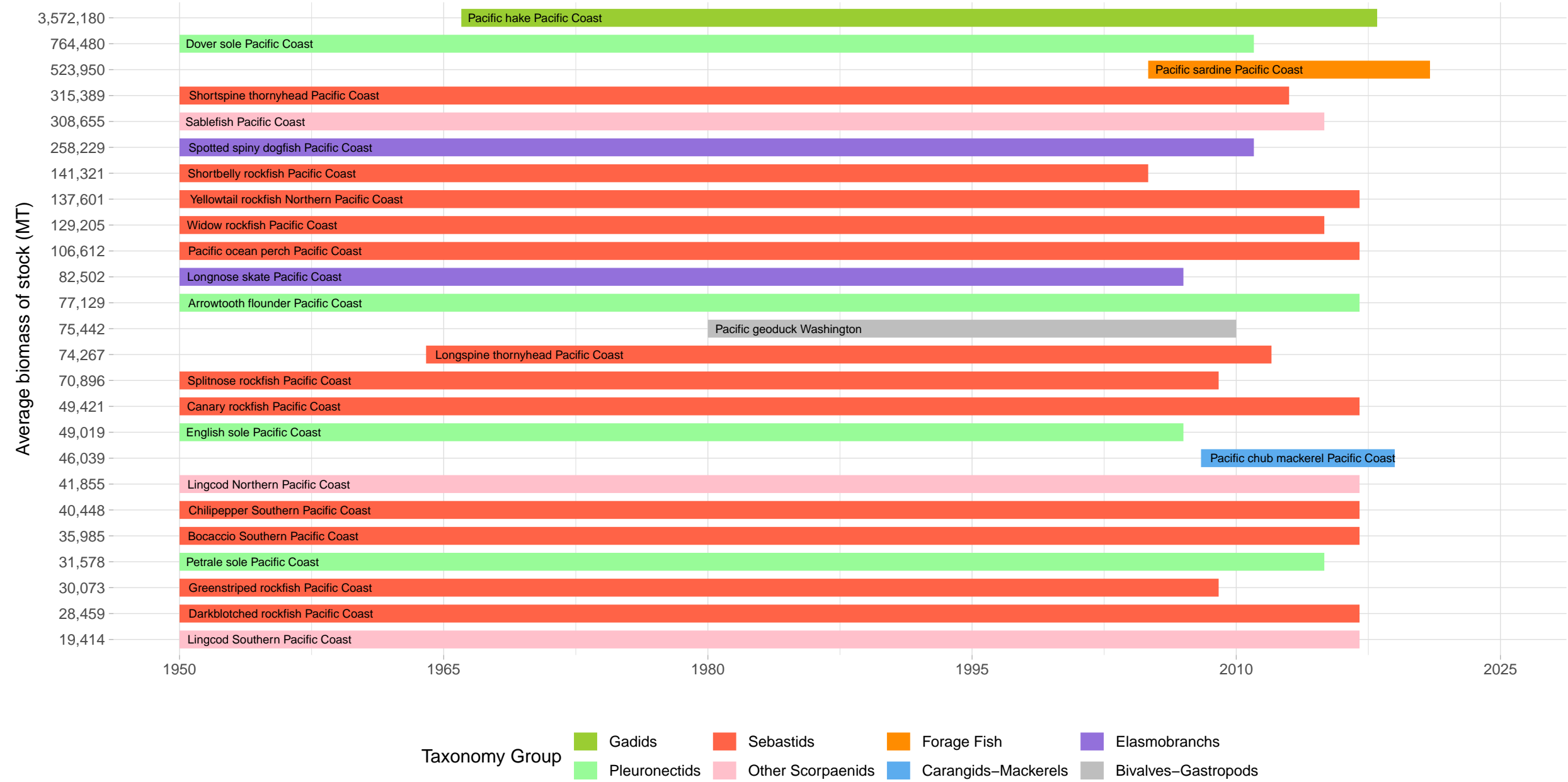


Biomass Coverage in US West Coast Region



Biomass Coverage Over Time in US West Coast Region
Stocks with highest average biomass



Biomass Coverage Over Time in US West Coast Region

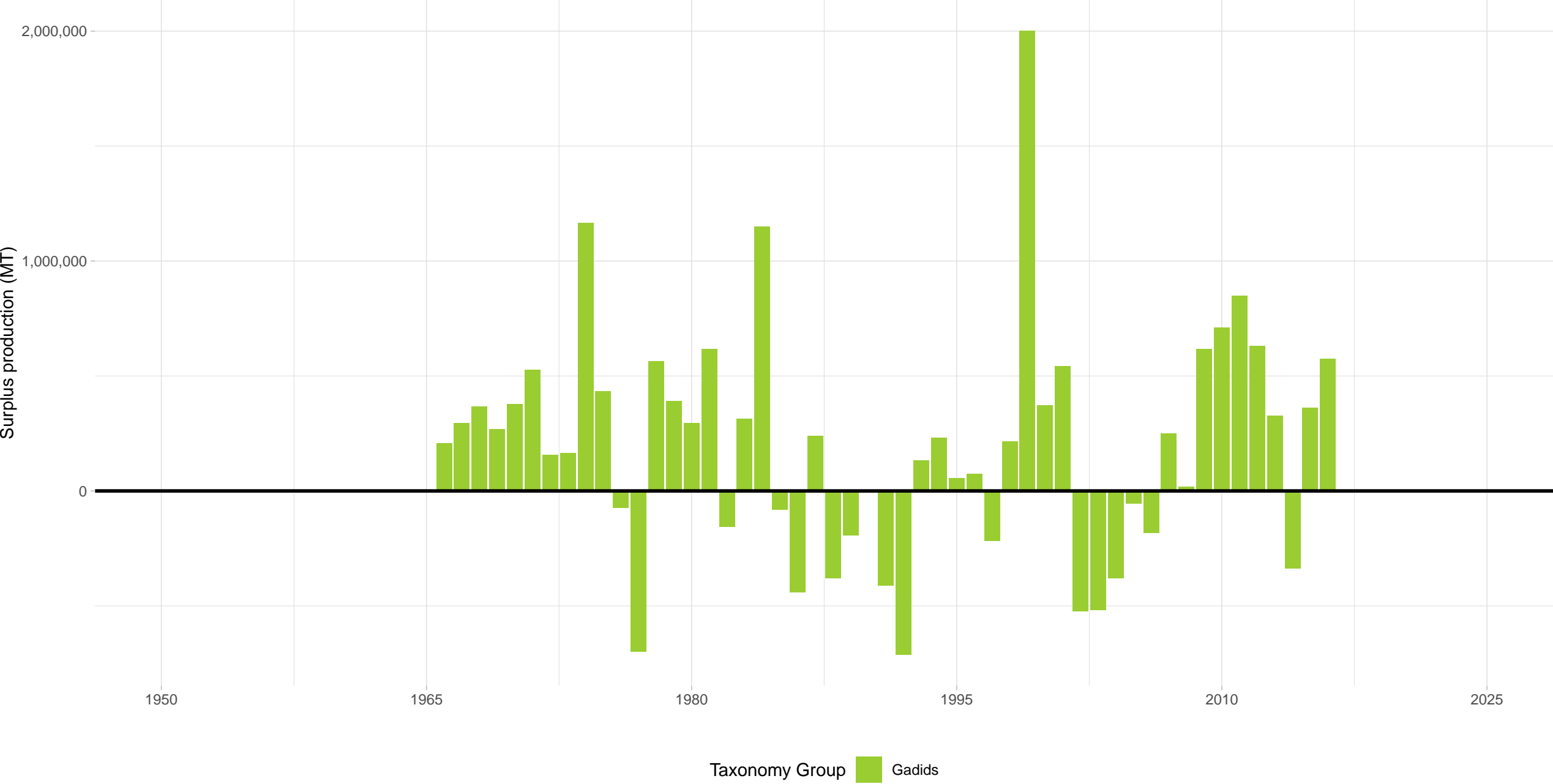
Stocks with lowest average biomass



Taxonomy Group ■ Pleuronectids ■ Sebastids ■ Other Scorpaenids

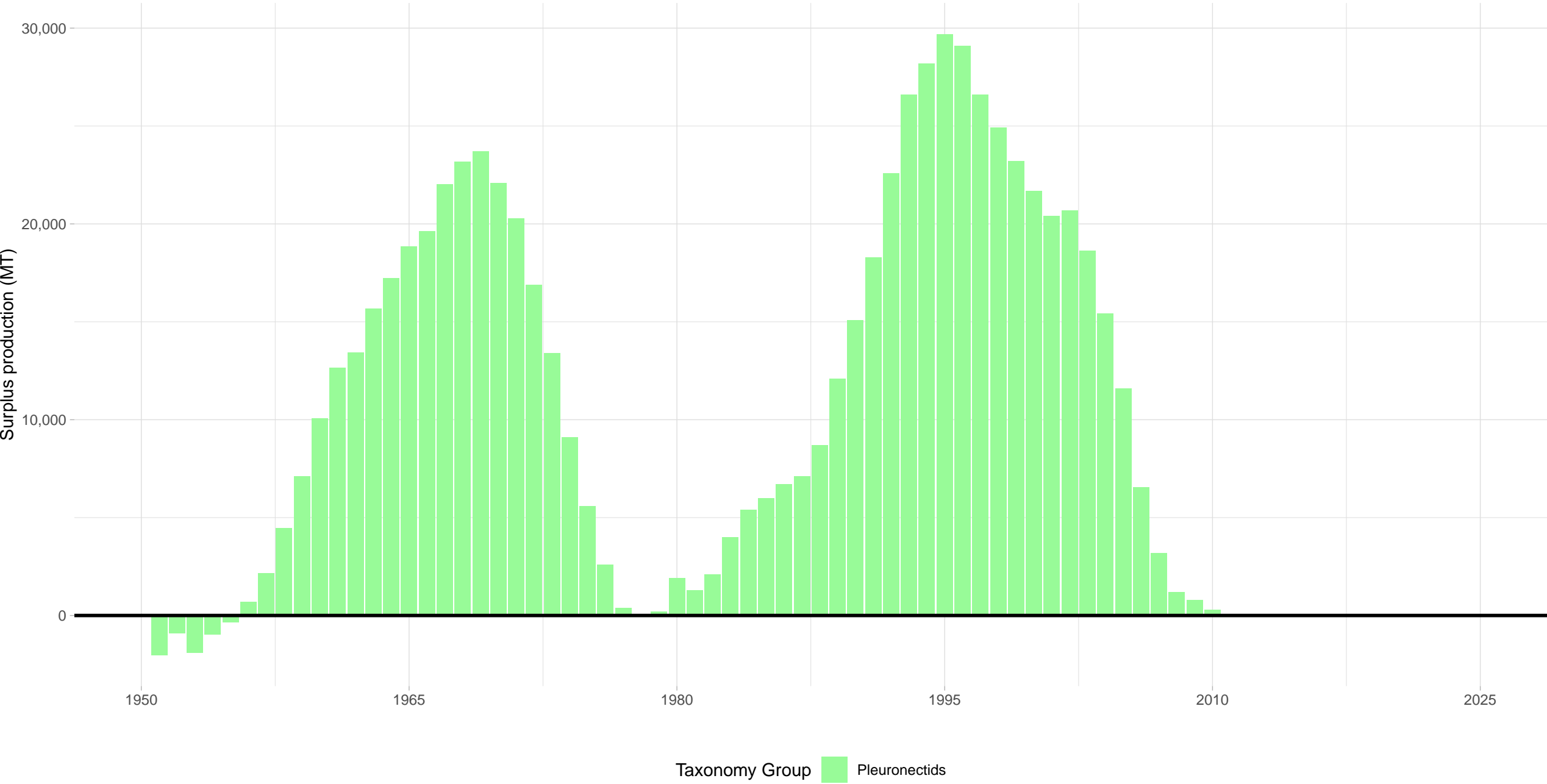
Pacific hake Pacific Coast – US West Coast Region

Stock represents 68% of average absolute surplus production



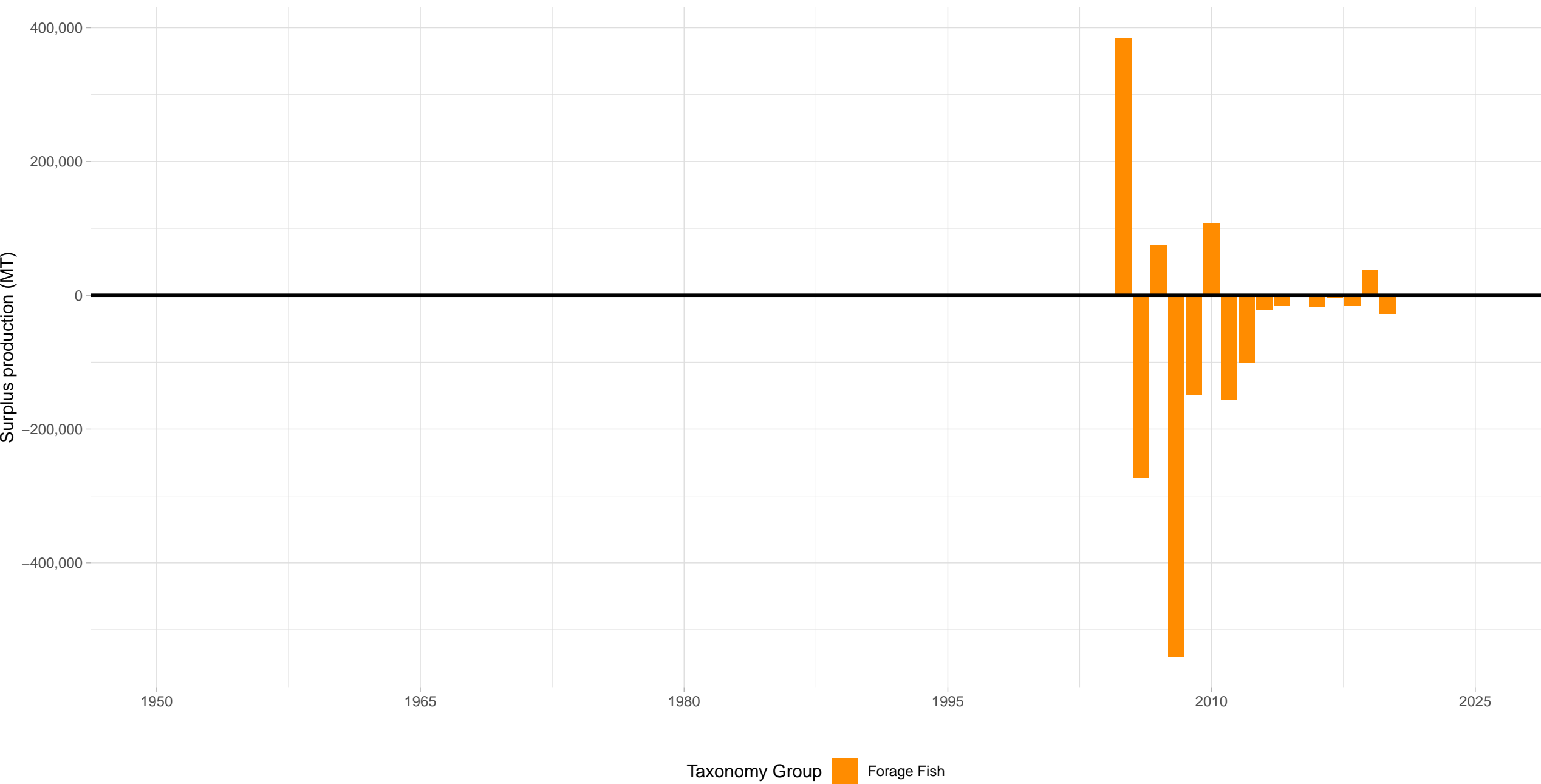
Dover sole Pacific Coast – US West Coast Region

Stock represents 1% of average absolute surplus production



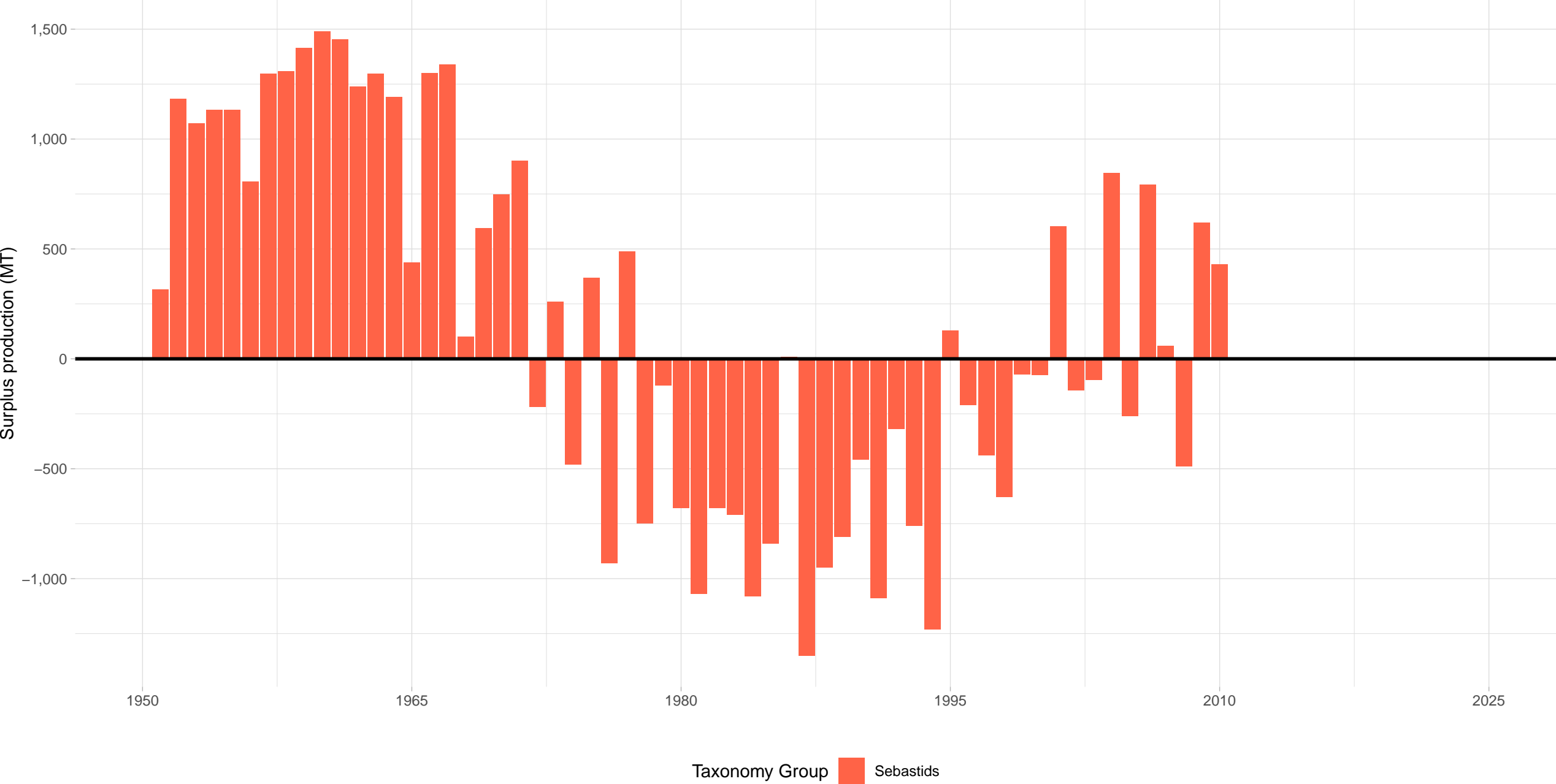
Pacific sardine Pacific Coast – US West Coast Region

Stock represents 20% of average absolute surplus production

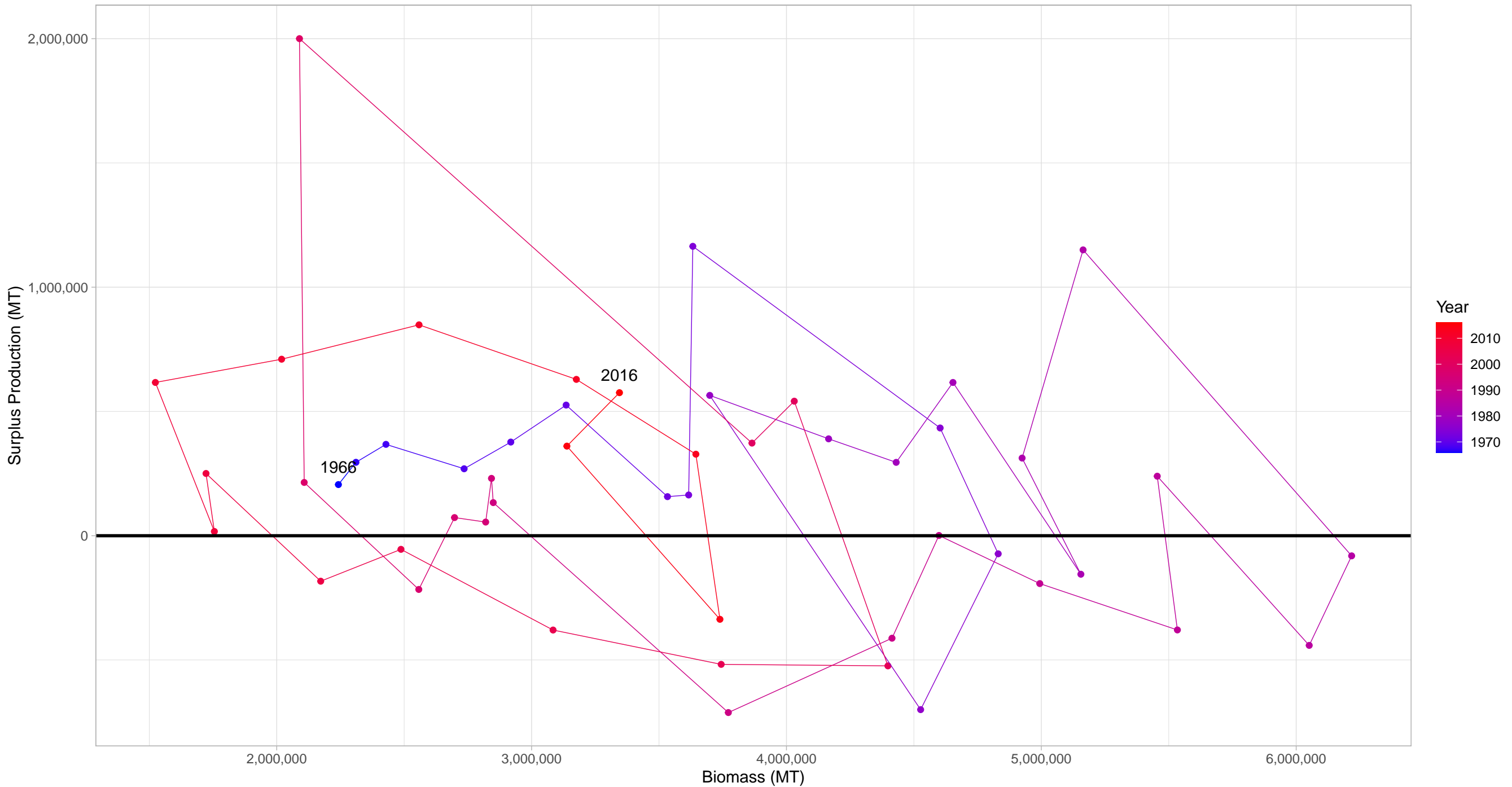


Shortspine thornyhead Pacific Coast – US West Coast Region

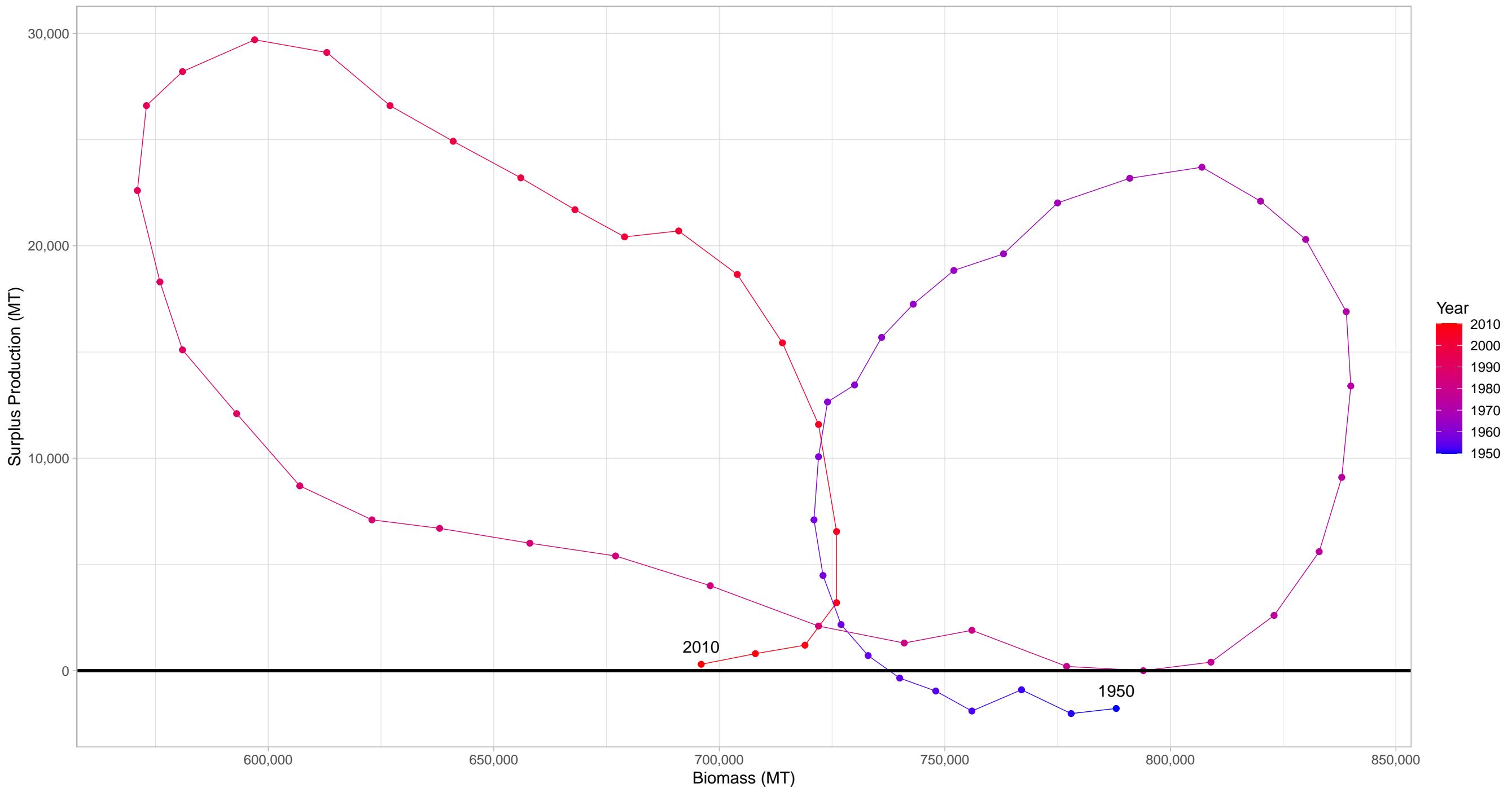
Stock represents 0% of average absolute surplus production



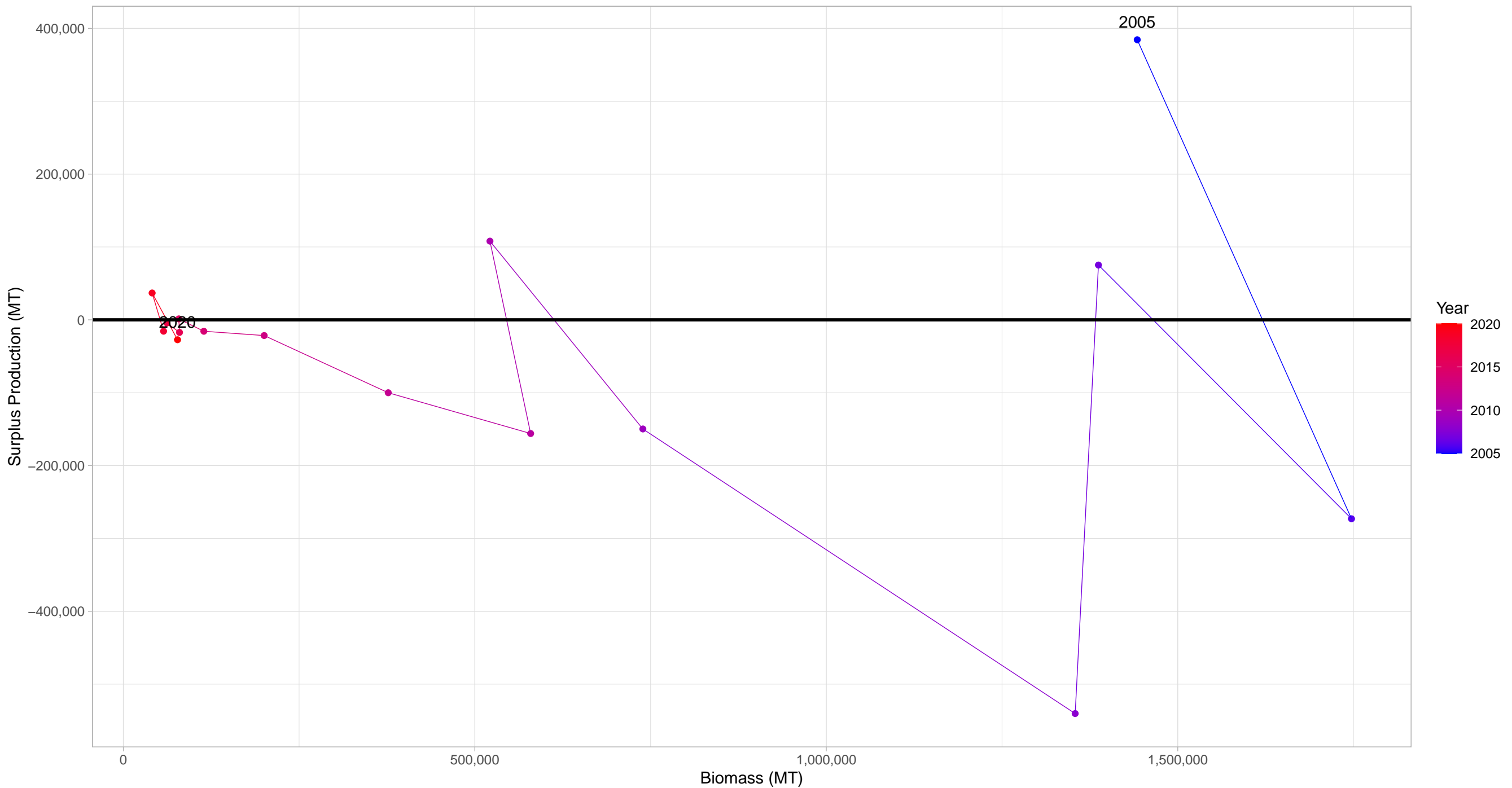
Pacific hake Pacific Coast in US West Coast Region



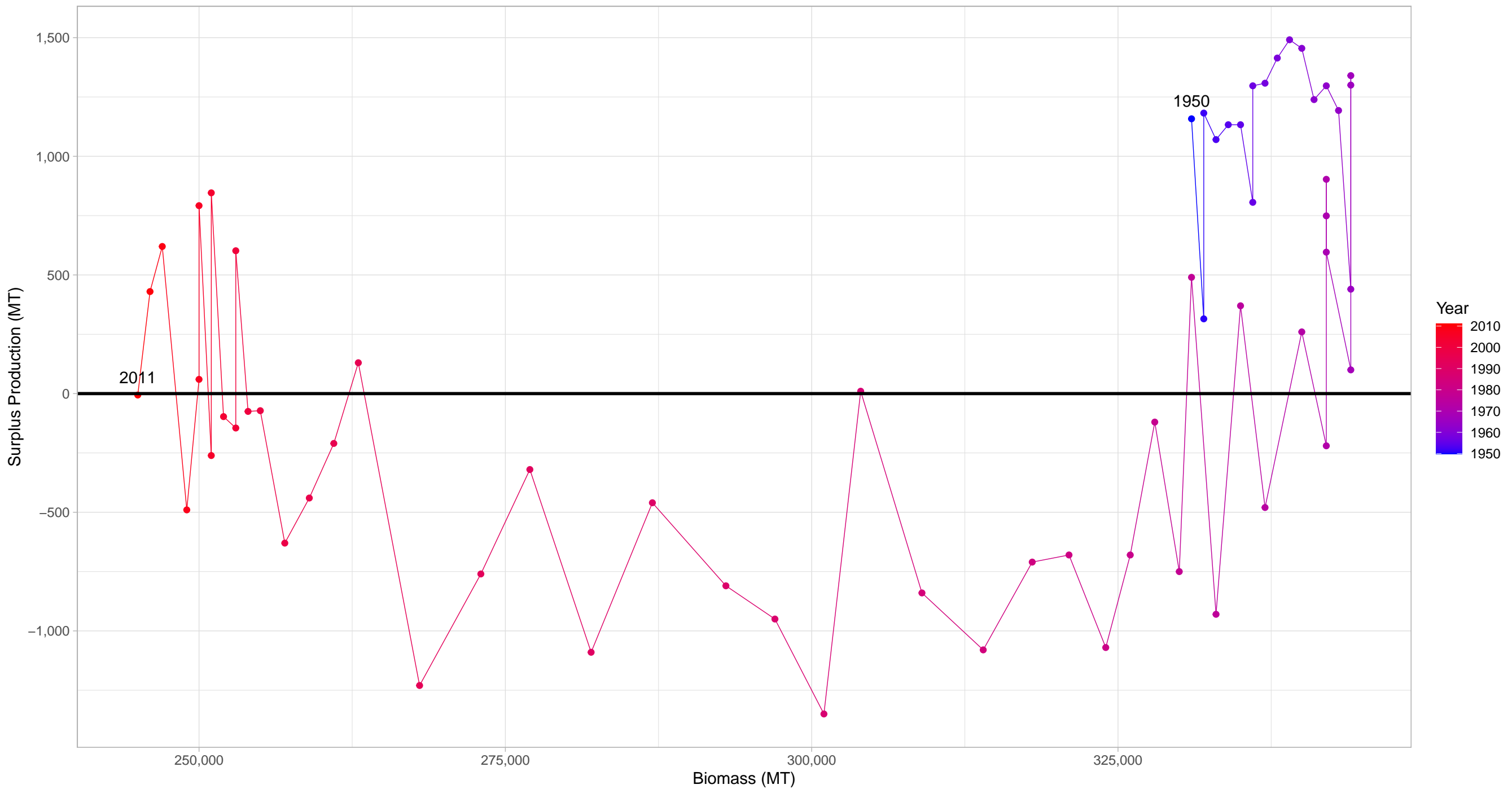
Dover sole Pacific Coast in US West Coast Region



Pacific sardine Pacific Coast in US West Coast Region



Shortspine thornyhead Pacific Coast in US West Coast Region



First and last years with recorded surplus production are labeled